

LEATHERCRAFT
by OHD



Specialty Hides



INDEX

Our Leather Story.....	3
What is Hair-On Leather?.....	4
Hair-On Hide Images.....	6
What is Embossed Leather?.....	8
Embossed Hide Images.....	10
What is Hand Rubbed Leather?.....	12
Hand Rubbed Images.....	13
Enduring Craftsmanship.....	14
“Shown In” Reference Page.....	15



Our Leather Story

The art of leather upholstery is something at which Leathercraft by OHD excels. We have been known as a leather company since our inception and we continue to provide unique, high quality leather upholstery services.

We offer a wide variety of one-of-a-kind leather looks and applications to suit your needs. Since we are a custom upholstery company, we can do any combination of specialty, aniline, protected, and nubuck leathers.

We have over 50 years of experience working with specialty leathers and our team is particularly skilled in their utilization. Because of the uniqueness of specialty hides, they require extra attention during patterning, cutting, and upholstering. Few people in the furniture industry can match the skill of our team to produce truly phenomenal specialty hide upholstered pieces.

Specialty hides that we offer include Hair-On hides, Embossed hides, and Hand Rubbed leather. We maintain a diverse collection of leathers in each category to ensure you have exactly what you need to create the perfect piece for your home.



WHAT IS HAIR HIDE / HAIR-ON LEATHER?

Hair Hide leather is exactly what it sounds like, leather that has hair on it. Specifically it is leather that still has the original hair on it, providing a natural looking accent to your home.

Hair Hides are very versatile and come in a variety of different colors and patterns. Cows are born with colorful and unique hides, not just plain black and white spots. Natural hair hides come in all white, tricolor, brindle, speckled, salt & pepper and gray to name a few. Each cow has a unique hide, which means that no two hides will be the same.

Much like a premium quality leather, hair-on hides have a natural beauty that offers individuality in every piece. Furnishings covered in hair-on hide have an individuality about them, highlighted by the unique color patterns, hair length, and natural markings of the hide. While hair hides have been around since the dawn of furniture making, there have been new unexpected applications in fashionable styles over the last few years.

Hairs can be dyed, printed on, or even have patterns laser cut into them for added dimensionality. These altered hides allow you to have more curious looking pieces in your home, like zebra print or brightly colored hides, while still sourcing your leather from the cattle industry. The leather industry only uses the hides of cows which are farmed for meat and dairy products, making it not only a beautiful material for your home, but a sustainable one as well.

At Leathercraft by OHD, we carry hair hides ranging from natural to printed to acid-washed. Our hair hides are carefully selected and sourced from some of the best leather producers in the country.

Hair Hides



Abel Natural
319H-11



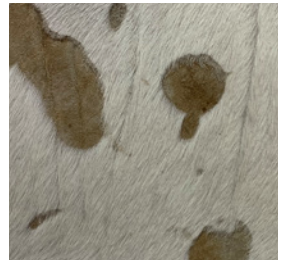
Light Grey Brindle
484H-41



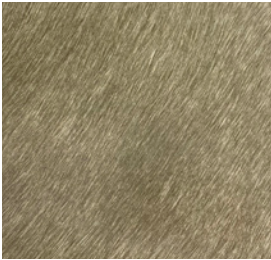
Trigger
415H-11



Chiffon Angora
348H-11



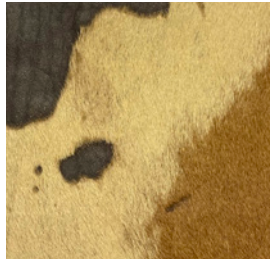
Palomino
557H-21



Silverback
310H-11



Buck
423H-11



Scottish Highland
558H-81



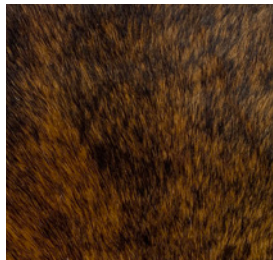
Nguni
409H-81



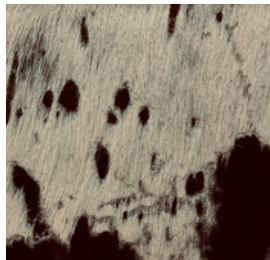
Watusi Two Tone
636H-81



Juarez Brindle
629H-81



Rockin' Ranch
385-81



Longhorn Moonpie
631H-21



Zebra
342-41









WHAT IS EMBOSSED LEATHER?

Embossing leather is a step in the finishing process where the cow hide is stamped or rolled under great pressure to create a pattern or design in the hide. The variety of patterns is tremendous, with motifs including alligator, crocodile, ostrich, flowers, and various geometrics to name just a few.

Embossing is typically done on the grain side by compressing the leather grain structure, allowing the uncompressed leather fibers to remain above. Two sided embossing is another technique that uses two embossing plates pressing from both sides (positive and negative). Both techniques create a richly textured three-dimensional effect that is sure to stand out.

The most common types of embossing include blind embossing, gold embossing, and color imprint. While blind embossing involves imprinting patterns without any color, gold embossing includes using gold films for imprinting. Color imprint, on the other hand, uses color films for the embossment.

We carry an assortment of embossed leathers, including geometric patterns and a wide variety of croc prints. Embossed leathers add character to your furniture and offer wonderfully unique accents for your home.

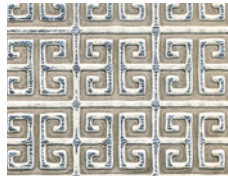
Embossed Hides



Lizzy Lowfog
632D-11



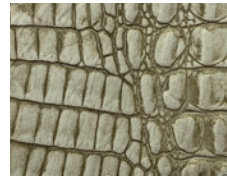
What a Croc Carolina
637D-31



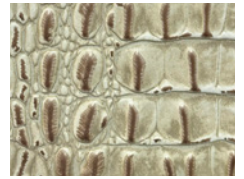
Greek Key Iridescent
627D-61



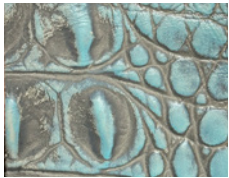
Jumbo Croc Silverback
630D-11



Gator Neutral
626D-11



Gator Bronze
626D-13



Crocadillia Blue Lagoon
623D-31



What a Croc Aqua
637D-71



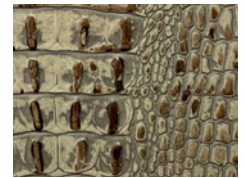
Big Dog Bolero
621D-81



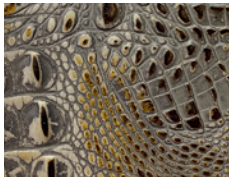
Gator Coach
626D-12



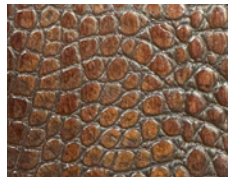
Crocochino
580A-81



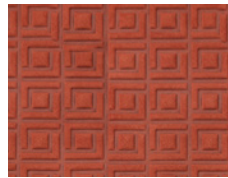
Gator Shady
626D-81



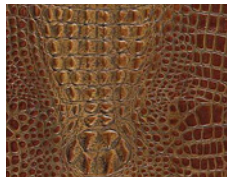
Falcon Eye
446D-82



What a Croc Copper
637D-51



Lattice Terracotta
328D-81



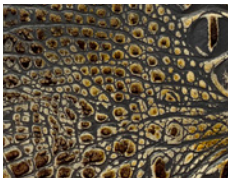
Cayman Mesquite
623D-81



Lukenbach
482D-81



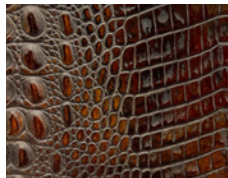
Caiman
566A-81



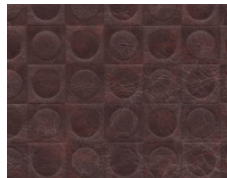
Wooden Armour
446D-81



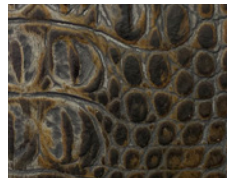
Derby Garnet
314D-81



Burnished Croc
450D-51



Mod Red Velvet
633D-51



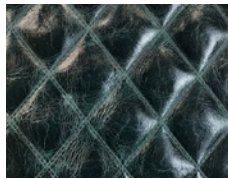
Crocadillia Marshlands
623D-31



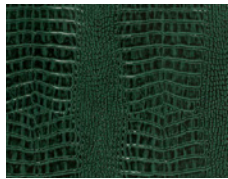
Solerno Rustic
624D-81



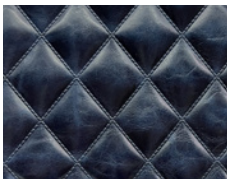
Diamondback Firesides
625D-81



Diamondback Gem
625D-71



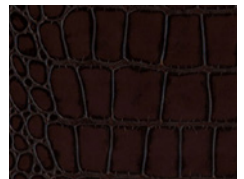
Chameleon Grassy
623D-71



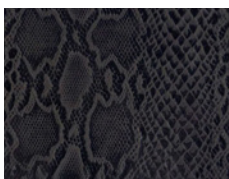
Diamond Navy
365D-31



Cairo Tawny
622D-81



Big Croc Coffee
620D-81



Slither Smokey
634D-61



Botanical Midnight
440D-61



Midnight Snack
450D-61



11



12



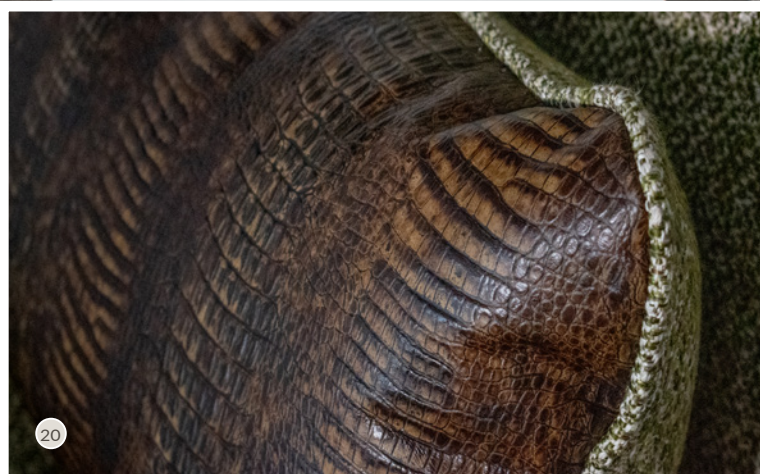
13



14



15



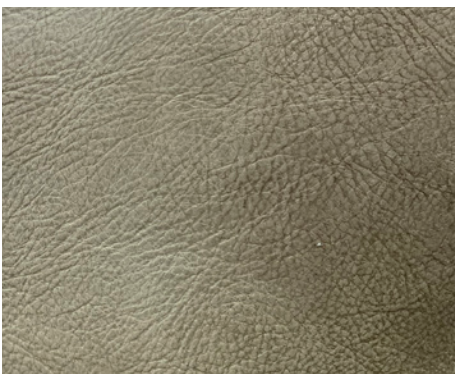
Hand Rubbed



WHAT IS HAND RUBBED LEATHER?

Hand Rubbed leather is a type of semi aniline that is finished by rubbing layers of aniline dyes onto, or off of, full grain leather until the desired color is achieved. This process is done after the pieces have been upholstered, providing a unique rub pattern for every frame. A protective topcoat is added to the dyes offering protection against stains and wear. Because full grain leather is used, subtle natural markings such as healed scars, finished scratches, insect bites and brands may be present.

This process is done by our skilled upholstery team who understands the interplay of colors where a patina of multiple rich tones is desired. Hand rubbed leather is highly sought after for heirloom and rustic leather furnishings.



Worn Porcelain
596R-12



Whiskey Barrel
596R-81



Old English
420A-81



21



22



22



23



24

ENDURING CRAFTSMANSHIP

Our furniture is built to last a lifetime. We are committed to creating furniture with the highest quality care and materials ensuring strength and comfort for generations.

All of our frames are made from solid hardwoods, reinforced with support rails, dowels, and screws. Sinuous wire springs are used in the backs of our pieces to provide superior support while maintaining the furniture's shape. Each sprung-up frame has a unique network of eight-way hand-tied tempered steel coils, providing a long-lasting foundation with the highest degree of comfort.

With specialty hides, pattern matching is a particularly complex task as the cutter must align the leather's hair or embossed pattern to flow naturally on the finished piece. Many of our furniture makers are 2nd and 3rd generation industry legacies, employing the highest standards of time-honored furniture making traditions. Our meticulous fabric and leather cutters, talented tailors, and experienced upholsterers are skilled working with an array of materials to create the best quality furniture for you.





FRAMES SHOWN IN

(1) 556 with 520H-21	Page 6	(13) 728-TO with 450D-51	Page 10
(2) 856-O with 385-81	Page 6	(14) 719-BS with 346D-11	Page 10
(3) 728-TO with 409H-81	Page 6	(15) 870-O with 381D-21	Page 10
(4) 703-O with 342-41	Page 6	(16) 582-VT with 365D-31	Page 11
(5) 733-O with 319H-11	Page 6	(17) 548-91 with 446D-81	Page 11
(6) 891-O with 348H-11	Page 7	(18) 337 with 329D-81	Page 11
(7) 416-S with 409H-81	Page 7	(19) 742-O with 482D-81	Page 11
(8) 703-O with 557H-21	Page 7	(20) Kidney Pillow with 566D-81	Page 11
(9) 435-89 with 558H-81	Page 7	(21) 441-VT with 420A-81	Page 13
(10) 841-O with 484H-41	Page 7	(22) 504-GS with 596R-12	Page 13
(11) 510-83 with 450D-61	Page 10	(23) 504-GS with 420A-81	Page 13
(12) 891-O with 346D-81	Page 10	(24) 536 with 596R-81	Page 13



LEATHERCRAFT
by OHD

(828) 326.6100
WWW.OURHOUSEDESIGNS.COM
LEATHERCRAFT-FURNITURE.COM
LEATHERCRAFT@OURHOUSEDESIGNS.COM
6429 HILDEBRAN SHELBY RD, HICKORY, NC 28602